



JPL CBRN IM/IT GLOBAL BIOSURVEILLANCE PORTAL (GBSP)

OVERVIEW

The Global Biosurveillance Portal (GBSP) is an unclassified web-based information-sharing system that facilitates collaboration and communication in support of the detection, management, and mitigation of man-made and naturally occurring biological hazards.

WHY DOES DOD NEED THIS?

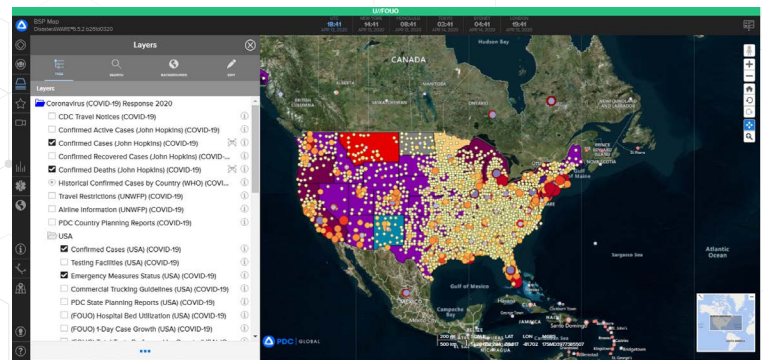
- To serve as a “one-stop-shop” for situational awareness of DOD COVID-19 response
- To integrate disparate data sources and analyses into a holistic picture of the pandemic
- To provide Commanders with accurate, timely information for informed decision making
- To collaborate directly in real time with other users across the whole-of-government response effort

SUPPORT TO COVID-19 RESPONSE

- Proactively instituted enhancements which enable “whole-of-government” users to find, share, display and analyze data:
 - establishing COVID-19 user group for data sharing
 - developing/deploying fifteen additional data layers
 - incorporating dashboards from WHO and JHU as applications
 - implementing enhanced data feeds from authoritative sources
- Working with Joint Artificial Intelligence Center to develop additional predictive analysis models (e.g., medical supplies, disease spread, consumer goods supply chain)
- Bringing Australia, Canada, New Zealand, United Kingdom partners on ahead of schedule (anticipated July 2020)
- Investigating integration of near-real-time data reporting from Community Based Testing Sites, predictive modeling
- Added users from White House Medical Unit, Joint Staff Surgeon’s Office, Centers for Disease Control and Prevention

WHY IS JPEO-CBRND SUPPORTING THIS?

- GBSP is an existing Program of Record being leveraged to provide users enhanced situational awareness of the DOD COVID-19 pandemic response
- GBSP has access to Unclassified data sources from DOD and Interagency, including DHS, HHS, CDC, Intelligence Community
- GBSP can quickly add Artificial Intelligence prediction models
- GBSP displays authoritative data as searchable map overlays
- GBSP can quickly integrate new, cutting-edge, and experimental software applications to respond to COVID-19 and future crises



GBSP map with layers for confirmed cases, confirmed deaths, and emergency measures status turned on. Layers can be turned on or off depending on the user’s information needs

“ EVEN THOUGH THIS THREAT WAS BROUGHT BY MOTHER NATURE INSTEAD OF AN ENEMY, JPEO-CBRND STILL HAS CAPABILITIES TO BRING TO THE FIGHT ” - DR. JASON ROOS

Government Partners

- AFWERX
- Argonne National Laboratory
- Armed Forces Health Surveillance Branch
- Army Public Health Center
- Centers for Disease Control and Prevention
- Combating Terrorism Technical Support Office Secure Unclassified Network (SUNet)
- Defense Health Agency
- Joint Artificial Intelligence Center
- Los Alamos National Laboratory
- National Biosurveillance Integration Center
- National Center for Medical Intelligence

Industry Partners

- ECS Federal, LLC
- Johns Hopkins University Applied Physics Laboratory
- Pacific Disaster Center
- TRAVAX®

Funding Status

Program transitioning to Total Package Fielding in FY21