



◆ UNCOMPROMISING INTEGRITY ◆ RESPECT FOR ALL ◆ COMMITTED TO EXCELLENCE ◆ ALWAYS READY ◆

CPE CBRND COMMAND BRIEF



Date

Presenter Name
Presenter Title

PROGRAMS EXECUTED ON BEHALF OF THE CHEMICAL AND BIOLOGICAL DEFENSE PROGRAM

P.A.I.D. U.P.

PEOPLE
first

ADAPT
to the Joint Force's needs

INTEGRATE
layered, incremental, and
innovative capability

DELIVER
on our commitments through
risk-informed decisions

UNITY
of command/effort

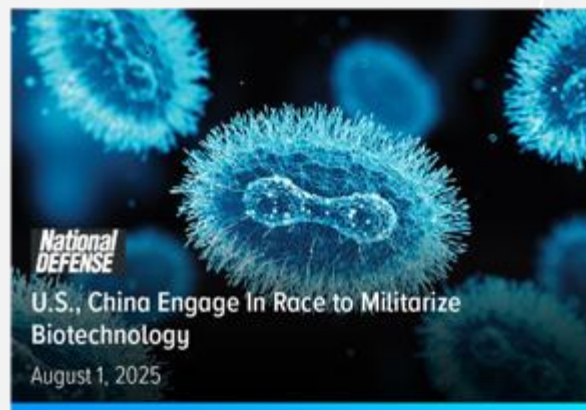
PIVOT
to Capability Portfolio
Management





WE FACE A COMPLEX THREAT ENVIRONMENT

KNOWN THREATS



EVOLVING THREATS



« We must prepare for and respond quickly to the full spectrum of chemical, biological, radiological, and nuclear threats »

WHO WE ARE AND WHAT WE DO



CPE CBRND

MISSION: Provide integrated layered Chemical, Biological, Radiological, and Nuclear Defense capabilities to the Joint Force across warfighting functions and Combined Joint All-Domain Operations.

VISION: A resilient Joint Force enabled to fight and win unencumbered by a chemical, biological, radiological, or nuclear environment; championed by innovative, agile, results-oriented acquisition professionals.

UNDERSTAND

PROTECT

MITIGATE

ENABLE



CBDP

MISSION: Anticipate and deter future threats by developing and delivering timely chemical and biological (CB) defense capabilities that enable a resilient Joint Force to prevail in CB-contested environments and protect the nation.

VISION: An agile, warfighter focused Enterprise that generates decisive chemical and biological defense advantages to maximize deterrence and defend the nation.

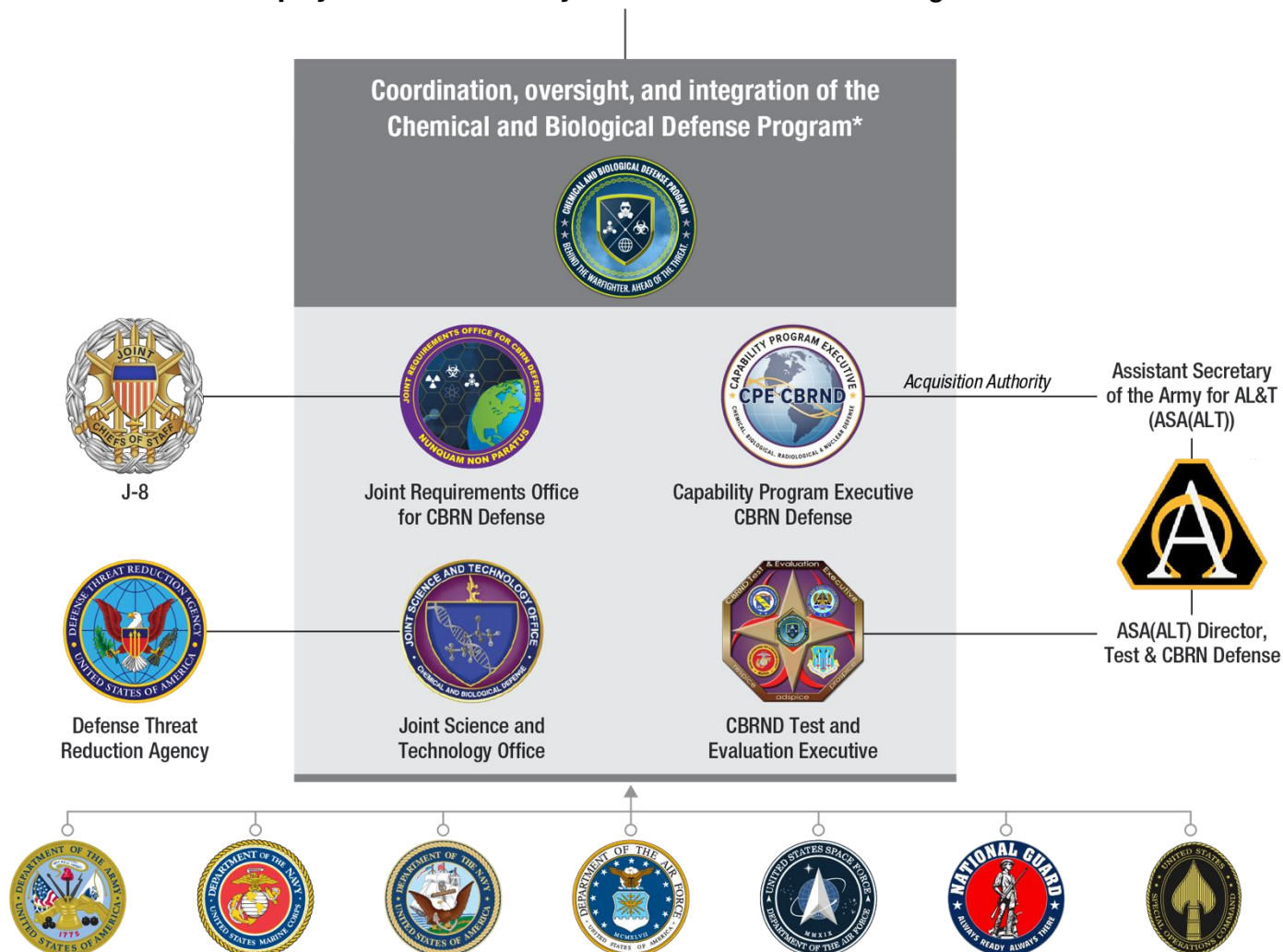
Support CBRN Integrated Layered Defense/Deterrence by denying our adversaries any advantage to using CBRN weapons

WHERE WE FIT

UNCLASSIFIED



Deputy Assistant Secretary of War for CBRN Defense Programs



*The Joint CBRN Defense Program Analysis and Integration Office (PAIO) supports the CBRND by providing analysis and advice to inform senior leader decision-making.



CPE CBRND ORGANIZATION LEADERSHIP

UNCLASSIFIED



Capability Program Executive
Executive
Ms. Nicole Kilgore
Executive Assistant
Ms. Carol Keyes



Interim Deputy CPE
Mr. Wyatt Ulrich



Chief of Staff
Mr. Gordon Graham



Joint Warfighter
Concept Integrator
Ms. Rachel Overman

Joint Project Managers (JPM)



CBRN Protection
Mr. Steven Batts

Deputy
Mr. Stacey Shepherd

Executive Assistant
Ms. Brenda Lopez-Price



Stafford, VA



CBRN Medical
COL John Nuckols

Deputy
Mr. Jeff Zerhusen

Executive Assistant
Ms. Holly Randles



Fort Detrick, MD



CBRN Sensors
Mr. Timothy Tharp

Deputy
Mr. L. Clay Williamson

Executive Assistant
Ms. Nicole Harris



Aberdeen Proving Ground, MD



CBRN Special
Operations Forces
Ms. Deborah Olson

Deputy
TBA

Executive Assistant
Ms. Michelle Stier



Aberdeen Proving Ground, MD

Joint Project Leads (JPL)



CBRN Integration
Mr. Paul Gietka

Deputy
LTC Denyada Barnes

Executive Assistant
Ms. Jeanette Benton



Aberdeen Proving Ground, MD



CBRND Enabling
Biotechnologies
Mr. Bruce Goodwin

Deputy
Ms. Nicky Dorsey

Executive Assistant
Ms. Nehemirah Maxwell



Fort Detrick, MD

CPE CBRND PORTFOLIO OVERVIEW



86 Acquisition Efforts • FY26 CDBP Proposed Budget: \$1.036B (\$615M RDTE; \$421M PROC)

FY26 Army Proposed Budget: \$130M (\$40.2M RDTE; \$89.7M PROC)

JPL CBRN INTEGRATION

JPM CBRN PROTECTION

► COLLECTIVE

► INDIVIDUAL

► DECONTAMINATION

JPM CBRN MEDICAL

► PROPHYLAXIS

► DIAGNOSTICS

► THERAPEUTICS

JPM CBRN SENSORS

► POINT/STANDOFF DETECTION

► RECONNAISSANCE

► AUTONOMOUS

JPM CBRN SPECIAL OPERATIONS FORCES

► PROTECTION

► SENSORS

JPL CBRND EB

Oct 2025

CBRN INTEGRATED LAYERED DEFENSE: EVOLVING TODAY FOR TOMORROW'S BATTLESPACE



V9.2 27-Aug 2024

SPACE

CYBER

AIR

LAND

MARITIME

ENABLE



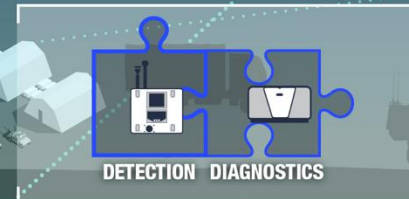
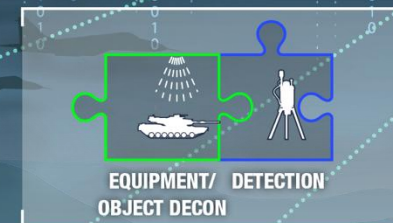
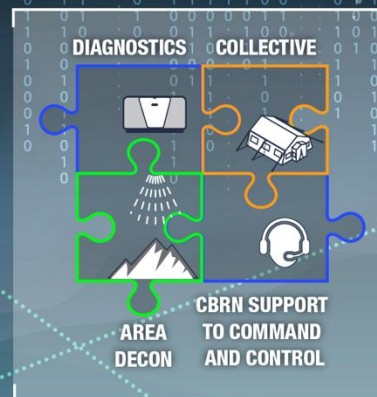
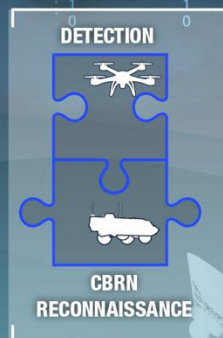
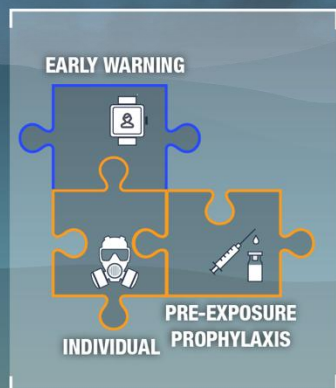
UNDERSTAND



PROTECT



MITIGATE



UNCLASSIFIED

ENABLE



• Threat, adversary intent and capability

• DOTmLPF-P

• Industry Partners

• Analyses and Assessments

CBDP CAPSTONE CAPABILITIES

Matching Capabilities To Threats, Ensuring Warfighter Lethality

STRATEGIC PRIORITY

Deliver **threat-informed, operationally relevant** chemical and biological defense capabilities at **speed and scale**.

INTEGRATED LAYERED DEFENSE

Employing CB defense capabilities across portfolios, time, and space so the **Joint Force can deter or defeat** advanced chemical and biological weapons during competition, crisis, and conflict.

INTEGRATED EARLY WARNING

- A collection of capabilities that provide the Warfighter **with battlespace awareness** and **decision advantage**.
- *Example capabilities:* Sensor integration, identification and characterization tools, CJADC2.

INDIVIDUAL PROTECTION

- Protective ensembles that enable the Warfighter to **fight through** and **limit operational impact** of CBW use.
- *Example capabilities:* Rapid prototyping of novel textiles, suits, and masks

MEDICAL RAPID RESPONSE SYSTEM

- Medical countermeasures and platforms that enable the Warfighter to **fight through** and **rapidly recover** from CB weapons.
- *Example capabilities:* Broad-spectrum MCMs, diagnostics, repurposed therapeutics, novel prophylactics

CONTAMINATION MITIGATION

- Innovative decontaminants that have potential to **increase the speed and decrease the scale** necessary to perform decontamination activities.
- *Example capabilities:* Light-weight, tactically flexible applicators and decontaminants, autonomous decontamination

ENABLERS: High Performance Computing, Experimentation, Rapid Prototyping, AI/ML



OVERVIEW OF PARTNERING VEHICLES



Awards outside of MA IDIQs and OTAs

- FAR-based awards of legacy components
- Small Business Innovative Research (SBIRs)

MCDC & CWMD OTAs:

- Inspires technical innovation and expedited awards
- Expands industrial base to "Non-Traditional" Defense contractors
- MCDC PoP through 2036
 - \$16.7B ceiling
- CWMD through 2027
 - \$10B ceiling

CWMD BOTAA

- Broad Other Transaction Authority Announcement (BOTAA) for prototype and follow-on production projects
- Announcement open through 2029

Army Open Solicitation (AOS)

- Multiple solicitation authorities to include Commercial Solutions Openings (CSOs), Broad Agency Announcements

Professional Support Services through OASIS+

- Professional Support across 6 business areas
- Task Order PoPs vary (base + options)

Logistics and sustainment MA IDIQ

- Contractor Logistics Support (CLS) & performance-based logistics, training, sustainment, acquisition logistics
- PoP through 2030; \$907M ceiling

Research, Development, & Production MA IDIQ

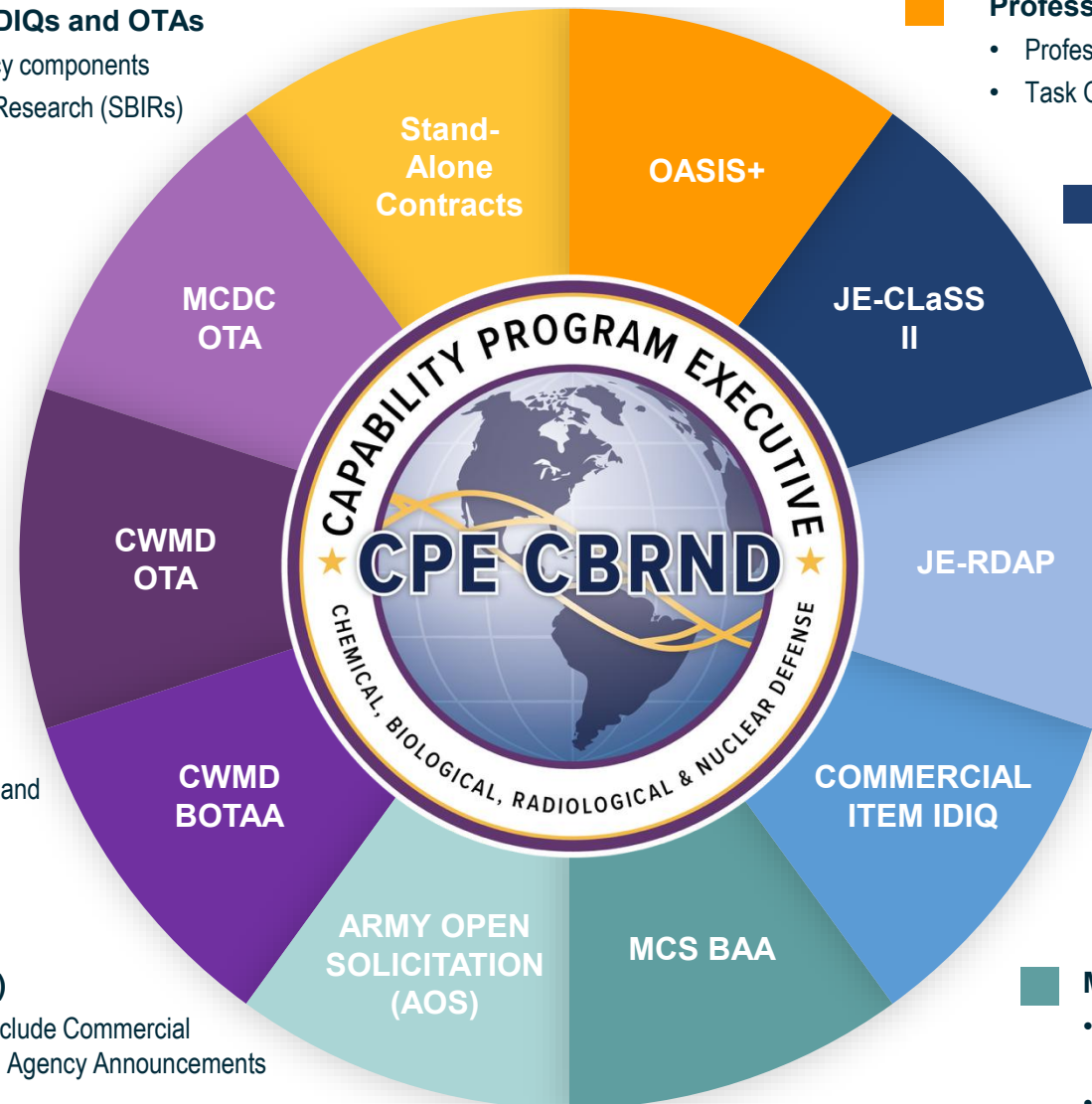
- Research, development, production, procurement, fielding, and initial sustainment
- PoP through 2027; \$8.27B ceiling

Commercial Item IDIQ

- CBRN-defense commercial items, equipment, and ancillary training
- PoP through 2030; \$500M ceiling

Medical Countermeasures BAA

- Flexible Broad Agency Announcement (BAA) leading to contracts, grants, cooperative agreements, OTAs, and TIAs
- Announcement open through 2027



The content of this briefing is for informational purposes only and is subject to change. It does not represent a pre-solicitation synopsis, does not constitute an invitation for bid or request for proposal and is not a commitment by the government to purchase products or services.

JOINT ENTERPRISE TECHNOLOGY TOOL (JETT)



Connect Directly with the CPE CBRND

- » Web-based industry engagement tool
- » Connects companies to appropriate points of contact based on answers to a short questionnaire
- » Cross-enterprise access facilitates collaboration among and with government organizations

Since JETT Launched in July 2022

QUICK STATS

Average response time:



- **3-5 days:** Initial assignment notification
- **< 5-7 weeks:** Conduct meeting

Shared access



Interagency partners

750+

**Vendor
Submissions**

JETT - YOUR CONDUIT FOR DOING BUSINESS WITH THE CPE CBRND



WORK WITH US

SERVING THE JOINT FORCE





@CPECBRND

CONTACT

Ms. Nicole Kilgore

Capability Program Executive
Chemical, Biological, Radiological and Nuclear Defense

410-436-6547

nicole.r.kilgore.civ@army.mil



WORK WITH US

WWW.JPEOCBRND.OSD.MIL/WORK-WITH-US

